

Release 5.2 Feature Review

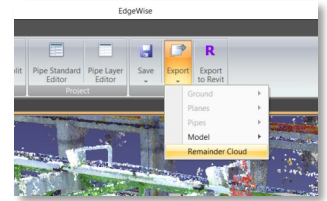
KEY FEATURES

- Remainder Cloud Export – Assisting users in modelling components and objects that EdgeWise cannot, and further enhancing the post-EdgeWise workflow.
- Enhanced Revit Workflow – No Template or Language Pack Dependencies – ever.
- Revit 2019 and Plant3D 2019 Support.
- New and Improved Structure Modelling Tools.
- User Interface and Quality of Life Enhancements – Sometimes it's the little things that really boost user modeling efficiency.

FULL RELEASE NOTES

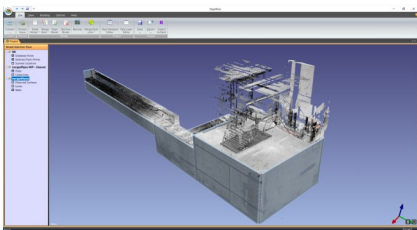
Remainder Cloud Export

Added a Remainder Cloud export option, which exports a file containing the points that do not correlate to loaded Structure, Piping, Ducting, or Wall models – essentially a point cloud containing only objects that can't be or haven't been modelled in EdgeWise.

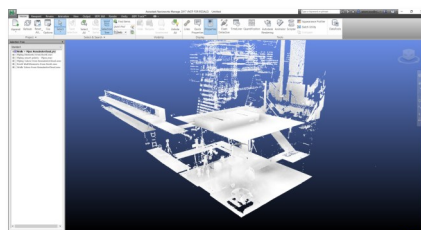


The available export formats are .PTS and .RCP (if a fully licensed version of Recap Pro, version 3.0.1.5 or later is installed).

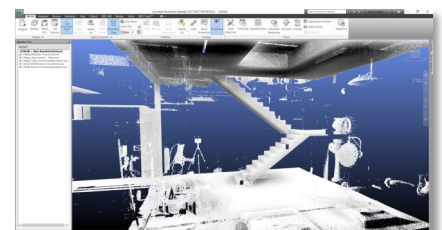
The point cloud exports (Smart Points and Remainder Cloud) will now automatically detect Recap Pro V4 and V5, if they are installed in the default installation location, when exporting .RCP files.



Point Cloud & Geometry In EdgeWise



Example #1 Of Remainder Cloud Output



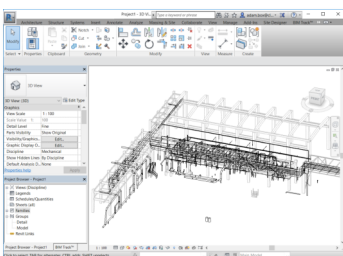
Example #2 Of Remainder Cloud Output

Autodesk Revit Updates

The EdgeWise Revit Plug-in now supports Revit 2019.

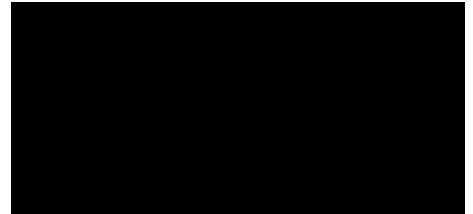
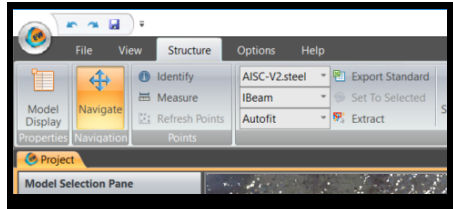
The EdgeWise Plant 3D Plug-in now supports Plant 3D 2019.

Updated Network IP Configuration Tool to support Revit 2019 and Plant 3D 2019



The EdgeWise Revit plug-in now automatically loads all families needed to complete the import process. As a result, any template can now be used, and manually loading the needed families is no longer necessary.

All Revit Objects created by the EdgeWise Revit Plug-in are now named as "EW_" objects. This is intended to make finding and replacing these objects with other family objects easier.



- Clean Pipes will now detect and highlight loops. If loops are present in the model, Clean Pipes will provide the option to skip loops during the Cleaning process. We strongly suggest skipping loops, as the Clean Pipes algorithm is not currently designed to handle loops. Please see the Plant/ MEP User Guide for more information on Cleaning loops.
- Added Release Notes to the Documentation menu under the Help Tab.
- Disabled Create ClearView Databases option for .PTS and .XYZ files in Process Scans, as those filetypes do not contain scanner position information.
- Locked Max Range at 10000 meters when processing .PTS and .XYZ files in Process Scans, as those filetypes do not contain scanner position information.
- Moved the E57 to PTX and Split PTX buttons to the Convert dropdown button.
- Added warning dialog to Export to Revit that will appear when exporting Systems with inconsistent Revit Family values, as they will not import correctly. The inconsistent Systems are highlighted in the viewport for convenience.

BUG FIXES

Fixed a bug in the EdgeWise Revit Plug-in where the height and width of a horizontal rectangular duct were swapped in some circumstances.

Fixed a crash that would occur when a corrupt .fls file was encountered in Process Scans. These files are now detected and ignored.

Fixed a crash that would occur when a .ptg files with lower case extension in Process Scans. These files are now processed normally, regardless of the case of the extension.

Fixed a bug where Planar Models created from multi-scan .ptx files would only extract data from the first scan in the file.

Fixed a crash that occurred when triggering a Redo while the Piping Tee Connection tool was active.

Fixed a bug where the Structure Pattern Select Tool would appear when a Ducting Model is active.

Fixed a performance issue where there was a long delay when changing a value in the layer column of the Chain Info SmartSheet or when Extracting pipes.

Fixed a bug where EdgeWise would not close correctly when encountering a Corrupt Point Database. Instead of closing, EdgeWise will still display an error message and remain open when encountering corrupt databases. We highly recommend against working with Corrupt Point Databases.

Fixed a bug that occurred when processing .PTX files with multiple origins, which was causing the Point Database to be positioned incorrectly.

USEFUL LINKS:

[Software Download](#)

[Online Help Videos](#)