

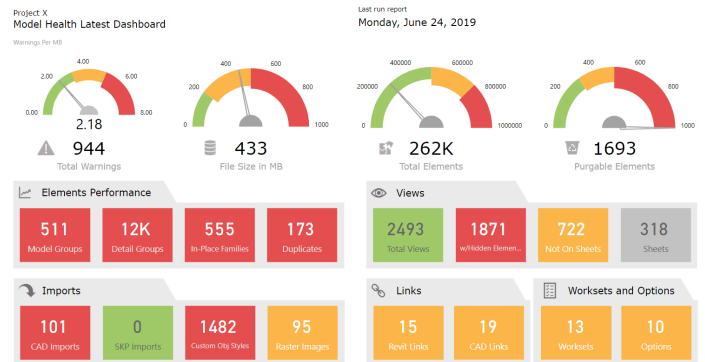
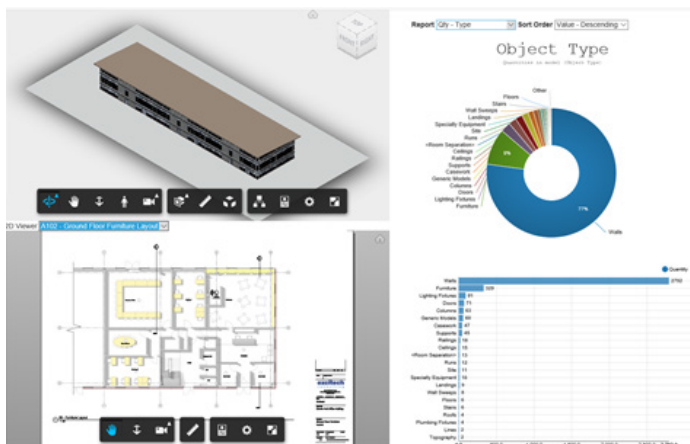
## Model Auditing and Reporting

Models are at the heart of our information delivery today, containing data and the drawings which we still utilise as contractual records and for construction information. But we know models develop as the project progresses and can be utilised for many different activities at each stage.

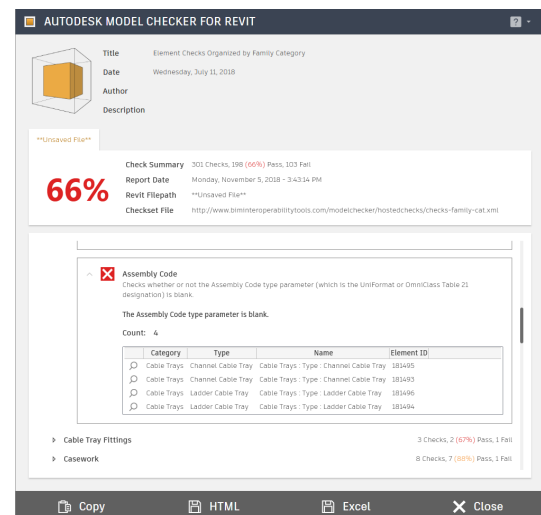
Excitech offers a model auditing services to help ensure alignment and that the model meets the requirements defined for that specific project stage. The auditing services is linked to a 75 point RAG system and takes into account the naming conventions and compliancy that may be required on the project.

Many different applications will be utilised during the model auditing process as the object categories, materials and datum levels are just some of the areas that need to be assessed.

If Revit is being utilised the platform warning triangle are a very informative means of seeing the condition of the model and highlighting areas that may need to be addressed.



As a contractor you take on risk when you take on a design model and develop it for construction. Is that model you have received fit for purpose, does it align to the requirements because if it doesn't the contractor will have to pay for the model to be developed so it does.



For more information on our construction services please call 01992 807 444 or email [marketing@excitech.co.uk](mailto:marketing@excitech.co.uk).

Automated processes and dashboards are assisting us with getting analytics on the condition of the model checking compliance and ensuring that elements such as generic objects, model size and levels are all correctly aligned.

## Features and Benefits of Model Audit Services

- Audit the model before your client
- Ensure its alignment to requirements
- Assist in producing better information
- Have confidence in your deliverables
- Reduced risk
- Educate your team
- Build from better information documentation
- Have confidence in what you deliver