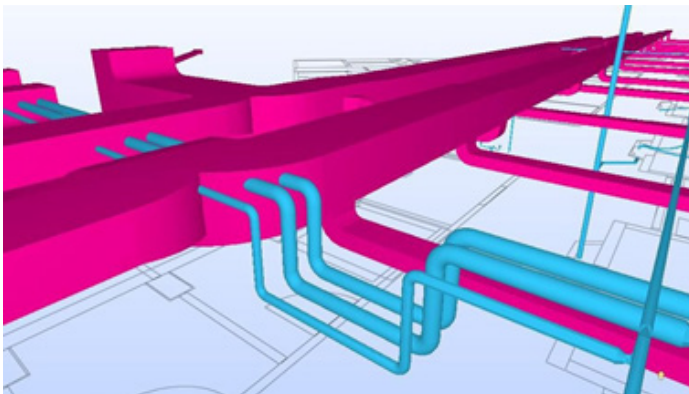


## Clash Detection Utilising Navisworks

Clash Detection or Interference Checking is one of the more established digital processes in construction and it is not hard to see why. With industry estimates suggesting an average of between £3,000 and £4,500 per clash to resolve (including administration, cost of delays, additional resource requirements and replacement materials), any work to minimise site issues provides a compelling and identifiable return on investment.

Navisworks Clash Detective has long been established as the market leader in Clash Management, with its ability to read in and aggregate over 50 different authoring tools directly, including industry standards such as AutoCAD, Revit and MicroStation and industry standard file exchange formats including IFC, IGES and STEP, Navisworks provides the capability to aggregate and clash detect multiple models from varying authoring tools.

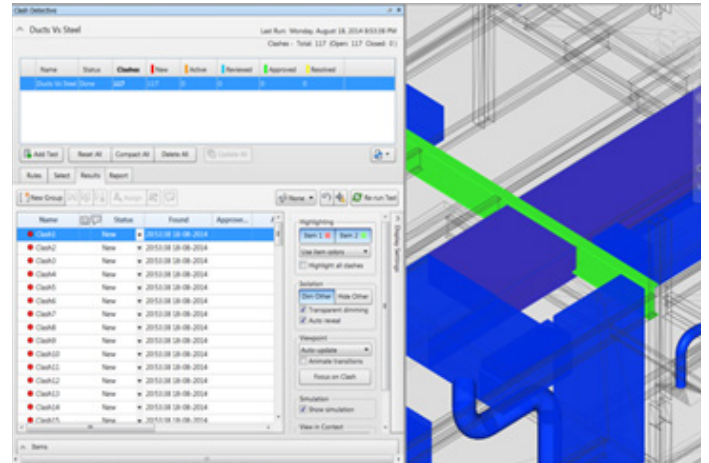


Navisworks Clash Detective can be used as a one-off final check for completed design work or as it is more regularly used today, an ongoing audit check of the project. Typically, clash management is now run at regular intervals, usually every 2-4 weeks throughout the lifetime of a project.

Navisworks not only allows you to clash across disciplines such as MEP against structure but it provides the ability to perform the three recognised clash performances:

**Hard Clashes** - where two static objects are physically taking up the same space

**Soft Clash or Clearance Clash** - where static elements may have greater spatial or geometric requirements than purely the physical element (uses include requirements for, accessibility, insulation, maintenance and safety).



**4D/Workflow Clash** - This is where the Clash Detective can be linked to the Navisworks animation tool to provide clashing against moving objects for example, a crane rotating through the top of a building.

Moreover, this could then be linked to the scheduling element of Navisworks to provide Clash Management of moving or static elements over time. With this method of clash detection, you analyse temporary works schedules and can identify clashes for the crews, equipment/materials fabrication and delivery clashes.

For more information on our construction services please call 01992 807 444 or email [marketing@excitech.co.uk](mailto:marketing@excitech.co.uk).

## Features and Benefits of Clash Detection Utilising Navisworks

- Earlier design validation
- Reduction in on-site clashes
- Improved coordination between disciplines
- Increased efficiency
- Reduced site costs
- Greater planning visibility
- Reduced RFI's and change orders
- Reduced waste
- Greater project transparency