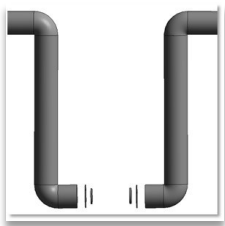


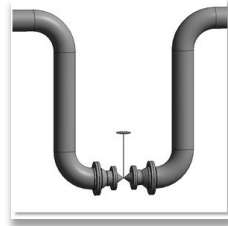
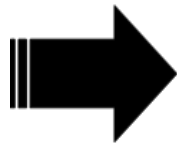
Release 5.2.1 Feature Review

Revit Export Improvements

- EdgeWise version 5.2.1 brings the ability to export valves and flanges to Revit.
- Valves and flanges of any length, size and standard (yes, even custom standards) are exported/imported to Revit with their information intact. Work has been done to ensure that even stem direction and flange spacing is correctly displayed inside of Revit.
- This is one of the most popular user requests of all time. The development team has done a wonderful job to ensure that this update meets people's expectations.



EdgeWise 5.2



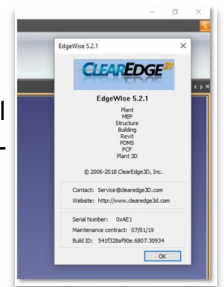
EdgeWise 5.2.1



Online Video Review

Full Release Notes

- Valves, Flanges and Flanged Valves are now supported in the EdgeWise Revit Plug-In.
- These objects are exported to Revit as custom-made generic Revit Family Objects.
- To make swapping these families out as simple as possible, a new Type of each family will be created for each combination of Component Type, Standard, and Pressure Rating exported from EdgeWise.
- Added the license Serial Number and Build ID to the About dialog.



Bug Fixes

- Fixed a hang that would occasionally occur when extracting pipes during Process Scans.
- Fixed a crash that would occasionally occur when extracting planes during Process Scans.
- Fixed an error in the dimensional data for Channel structural objects in the AS_NZ standard.

Download links

[Software Download](#)

[Online Help Videos](#)