



LayOut – part of the SketchUp Pro suite – combines SketchUp models with text and 2D vector illustration to help you produce beautiful presentations, permit submittals, construction documents, and other dimensioned drawings.



Produce professional drawing sets with LayOut

LayOut provides powerful dimensioning, drawing and page layout tools to create working drawings and presentations from SketchUp models. Drawings can be exported as DWG/DXF files for use in any CAD program.

Combine dimensions, text, and graphics

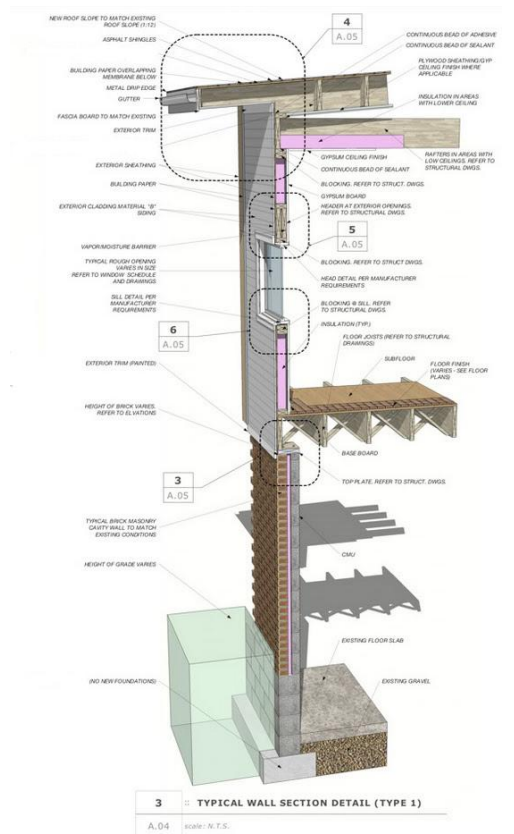
Add logos and title blocks to LayOut templates for brand consistency. Assign different drawing scales to SketchUp model views and dimension them without leaving LayOut — and without using a separate CAD tool.

Drawings, dynamically linked to 3D models

SketchUp models are dynamically linked to your LayOut file: any changes you make in SketchUp are automatically reflected in your documents. Link to files in the cloud via Dropbox, Google Drive or Trimble Connect.

One document for prints and presentations

A single LayOut document can be used for both printing and on-screen presentations. Create high-resolution large format prints, export as PDF for onward distribution, or present directly from the application... in 3D.



Visit www.sketchup.com/pro to purchase or download a free trial.