

ARCHIBUS Datasheet - Web Central

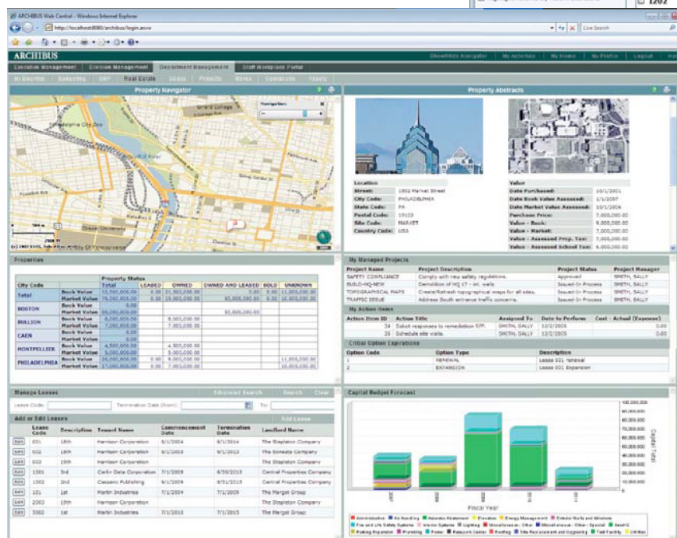
Harness the power of the Web to share information and distribute self-service work processes throughout your organisation

Does your organisation need to empower its associates to work effectively and collaboratively, unconstrained by time zones or distance? Leverage the power of ARCHIBUS using a simple Web browser with ARCHIBUS Web Central. Web Central is designed to help organisations cost-effectively maintain and distribute accurate facilities and infrastructure management information across the enterprise. A flexible suite of activities lets organisations easily grant access to end-users based on their specific needs and workflows. Role-based security keeps everyone's data securely partitioned, while consolidated reports and personalised dashboards let authorised users flag exceptions, monitor progress, and manage to results.

Benefits

- Delivers instant access to facility and infrastructure information using a simple Web browser
- Improves the breadth and reach of knowledge delivery throughout the organisation
- Promotes appropriate communication and collaboration via role based security
- Enhances productivity and decision-making within a cost-effective, self-service environment

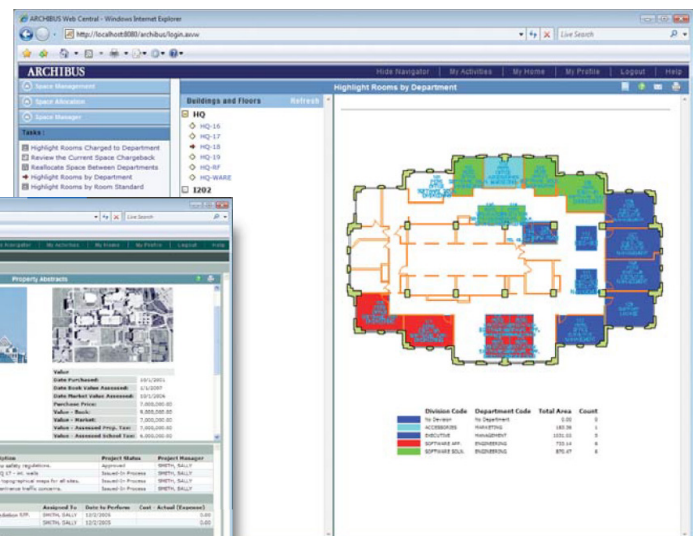
Users can access personalised, intelligent dashboards to drill-down through critical information and 10,000+ reports "out-of-the-box"



Activities and Features include:

- Real property and lease management
- Space allocation and occupancy
- Workplace portal
- Reservations
- Service desk and on demand work
- Building operations
- Emergency preparedness
- Asset management
- Project management
- Capital budgeting
- Move management
- Personalised dashboards and analytics
- Configurable workflow rules
- Integrated document management
- Multi-dimensional view analysis
- Dynamic restriction highlighting
- Real time KPI tracking
- Integrated learning path

Plus many more...



Role-based security allows authorised users to access tasks and information relevant to their specific role or location within your organisation

ARCHIBUS Datasheet - Web Central

Access and Update Information Easily

ARCHIBUS Web Central seamlessly connects to and complements the Windows-based ARCHIBUS Enterprise solution. Through it, authorised users gain access to all the data residing in ARCHIBUS applications - from Real Property and Lease Management to Building Operations and more. Use ARCHIBUS Web Central to ensure that accurate, up-to-date information is available to all members of your organisation who need it.

- Access and update facility and infrastructure data using the familiar interface of a Web browser
- Easily maintain and distribute information across your entire enterprise
- Generate reports and initiate action without any training, using the intuitive nature of the Web

Extend and Improve the Flow of Information

By connecting your facilities and infrastructure via the Internet or intranet, ARCHIBUS Web Central will change the way you manage your organisation. Users get universal access to up-to-the-minute facility and infrastructure information, 24 hours a day, seven days a week.

- Create personalised intelligent dashboards composed of multiple views to focus your attention on just the information you need for your specific work
- Leverage control of the global enterprise by consolidating information from headquarters, regional offices, and remote branch offices
- Enhance the value of collected data through quick access to multi-dimensional data for analysis by any category you have established

Promote Organisation-Wide Communication

Using role-based security, ARCHIBUS Web Central leverages the connectivity of intranets to link authorised users and their data from across the enterprise. Once data is widely available on-line, it can help eliminate duplicate effort and errors due to miscommunication.

- Maximise existing resources throughout the organisation by implementing Web Central's automated workflow and messaging capabilities
- Store documents such as purchase orders, equipment manuals, contracts, and more, using the embedded document management functionality
- Promote consistent business practices across the organisation
- Speed communication between work groups, reduce administrative errors, and document process and execution

Web Central: Empower with Self-Serve Processes

ARCHIBUS Web-based applications such as Service Desk, On Demand Work, Reservations, Move Management, Project Management, and Capital Budgeting among others, enable fast access to centralised information to promote a cost-effective, self-service environment.

- Provide a "do-it-yourself" posture by providing users access to a wide range of common services
- Initiate maintenance help requests, moves/adds/changes, space occupancy queries, and more
- Control help request cycle through Service Level Agreements to authorise, prioritise, and complete requests
- Simplify your entire room reservation process to help facilitate productive meetings

ARCHIBUS Datasheet - Web Central

Enhanced Productivity for Everyone

Extend information availability to remote users who need to access specific activities and reports in ARCHIBUS. Personalised, intelligent dashboards grant directed access to the information needed to accomplish specific facilities and infrastructure management goals.

- Facility managers can access facility and infrastructure information, anywhere, anytime
- Field personnel save time by easily picking up work order requests from remote locations and determining which tools and materials to bring
- Branch office personnel can access up-to-date headquarters information in real-time
- Strategic planners have access to the historical space information they need to make planning decisions
- Purchasing managers can verify invoices against inventories and track back orders
- Human resources managers can develop occupancy plans and locate vacant space for new hires
- Building owners can determine rentable areas
- Real estate managers can track detailed lease characteristics, such as options, payments, prorated taxes, and more
- Accountants can charge departments for the space they occupy, plus their share of common areas
- Risk managers can evaluate asset portfolios to obtain adequate insurance coverage