

What's New? Platform

Platform V23.2 has several platform enhancements

Federated Authentication (SAML 2.0)

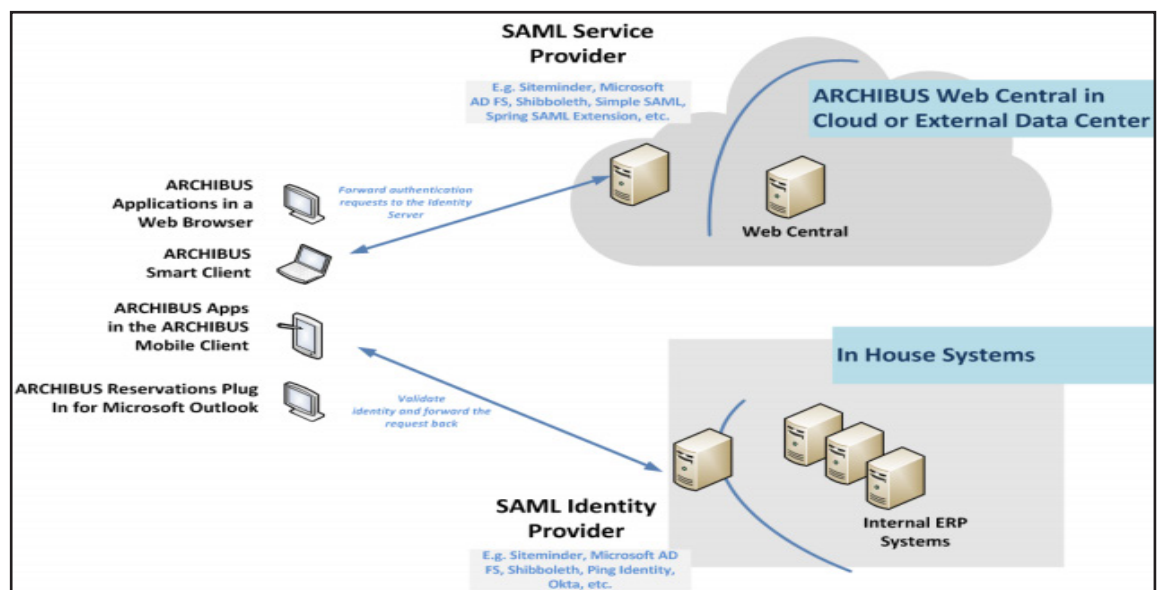
Increasingly, organisations are consolidating their IT systems and integrating a wide variety of systems hosted in different corporate locations around the world, hosted in different external data centres or hosted in the cloud. For this reason, ARCHIBUS V.23.2 includes support for the SAML 2.0 authentication protocol for the entire ARCHIBUS product line. ARCHIBUS can work with any SAML 2.0 provider that is compatible with the Shibboleth reference implementation.

The SAML protocol lets you federate different systems together, even if they are hosted in separate clusters, in a remote data centre, or in the cloud. Under SAML, resources are protected by Service Providers and authentication is managed by an Identity Provider. Your system administrator registers each Service Provider with the Identity Provider to establish a trusted relationship.

If a user is not authenticated and they access a version of Web Central protected by a Service Provider, the Service Provider redirects the request to the Identity Provider. The Identity Provider is the central authentication server for all users and applications for the organisation. The Identity Provider processes the request by presenting its own sign-in method. This sign-in method can be a dialog with username and password prompts, a two-factor authentication, a physical USB key, or a bio-metric scan. Once the user is accepted, the Identity Provider redirects the successful request and trust information back to the Service Provider, which allows that request and subsequent requests through to the Web Central server.

Using SAML, organisations can:

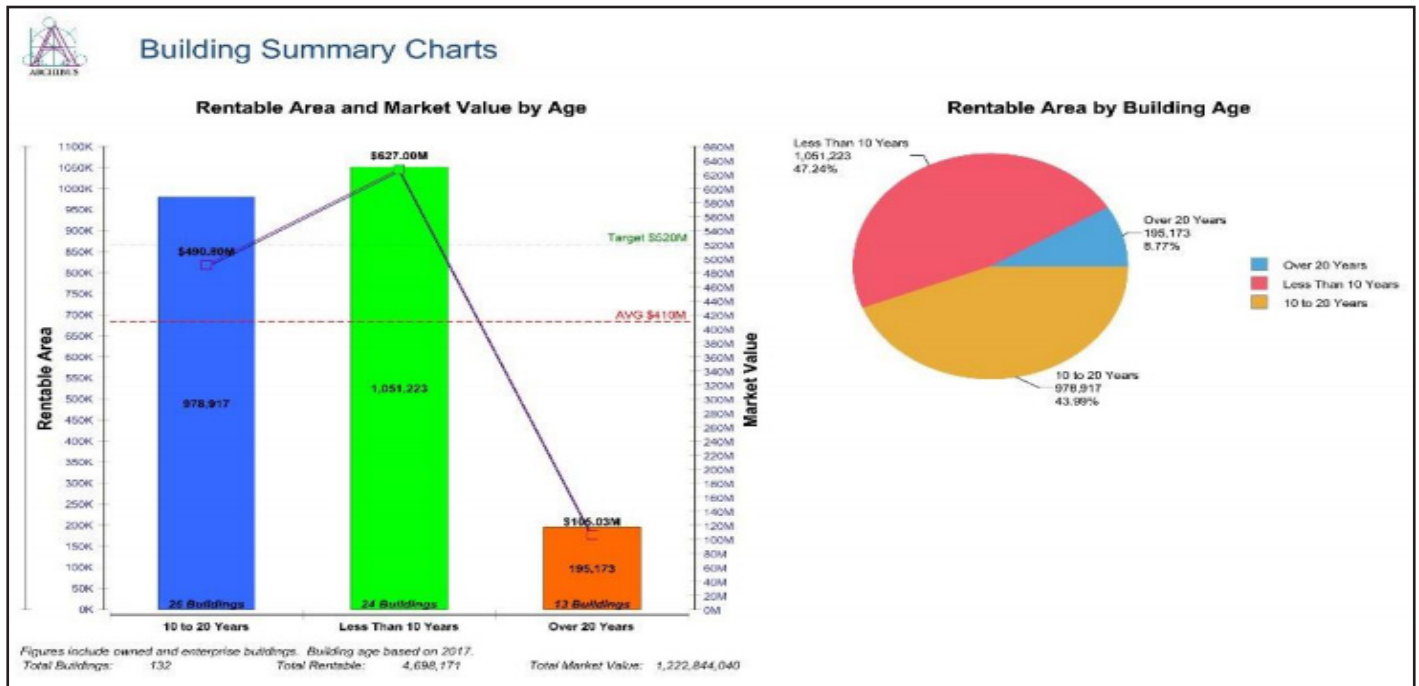
- Manage all users and all systems centrally. If you remove a user from the Identity Provider, they are removed from all systems
- Use the organisation's own single, consistent preferred means of authenticating users
- Avoid having client Web browsers or client applications store any username and password or other authentication information



What's New? Platform

Web Central: BIRT Reporting

V.23.2 enables you to create your own personalised "pick and place" reports and add them to your ARCHIBUS Home Pages and Process Navigators. You can load these reports within a console frame or as pop-up windows. The BIRT Report Designer has features for adding fields by dragging and dropping data tables within a WYSIWYG report editor with full page layout, header, footer, tabular reporting and charting capabilities. BIRT's resource library includes: BIRT support aggregations, summaries, data cubes, cross tables, and expressions, which can be used to automatically highlight data that meet specific criteria.



Self-Service Password Reset: Users who lost their passwords can request password reset on the Sign-In Form. Web Central will send an email to the user with the link that allows the user to enter the new password. System administrators can enable or disable the self-service password reset feature, but this is enabled as default.

Mobile Framework: The ARCHIBUS Mobile Framework includes a series of advances

Mobile Client 3.0: There is a new Mobile Client on the Apple Store and on Google Play. This client includes SAML authentication support. It also uses the latest Cordova library, which includes several security improvements.

Federated Authentication (SAML) Support: With SAML support, organisations that use SAML to authenticate their in-house, cloud or hybrid cloud systems can include ARCHIBUS mobile in their authentication scheme.

Sync Improvements: The sync action now has improved support for document sync performance. The action now transfers files in binary mode rather than base64 and uses the document revisions to sync only changed documents. The on-demand document sync is now also integrated with the main sync feature. The sync process also supports syncing a selected number of records.

Redlines: Now use the native device screen capture for capturing redlines, which greatly speeds up redlining very large drawings.

Attach Documents: The Mobile Framework now contains support for attaching documents from phones.

What's New? Platform

Geospatial Extensions for Esri

Linear Assets: In the real world, assets come in many forms, shapes, and sizes. In GIS and on maps, we represent assets with one of the following geometries: polygons, points, or lines. The majority of ARCHIBUS entities – such as parcels, buildings, rooms and equipment – are well-represented by polygons. When we use a larger scale, using points as markers makes sense to represent such things as locating equipment on a large campus or buildings on a city or country scale. However, certain entities – such as pipe lines, power lines, railways, rivers, and roadways – are best represented by lines. ARCHIBUS V.23.2 adds support for linear assets to the Geospatial Extensions for Esri.

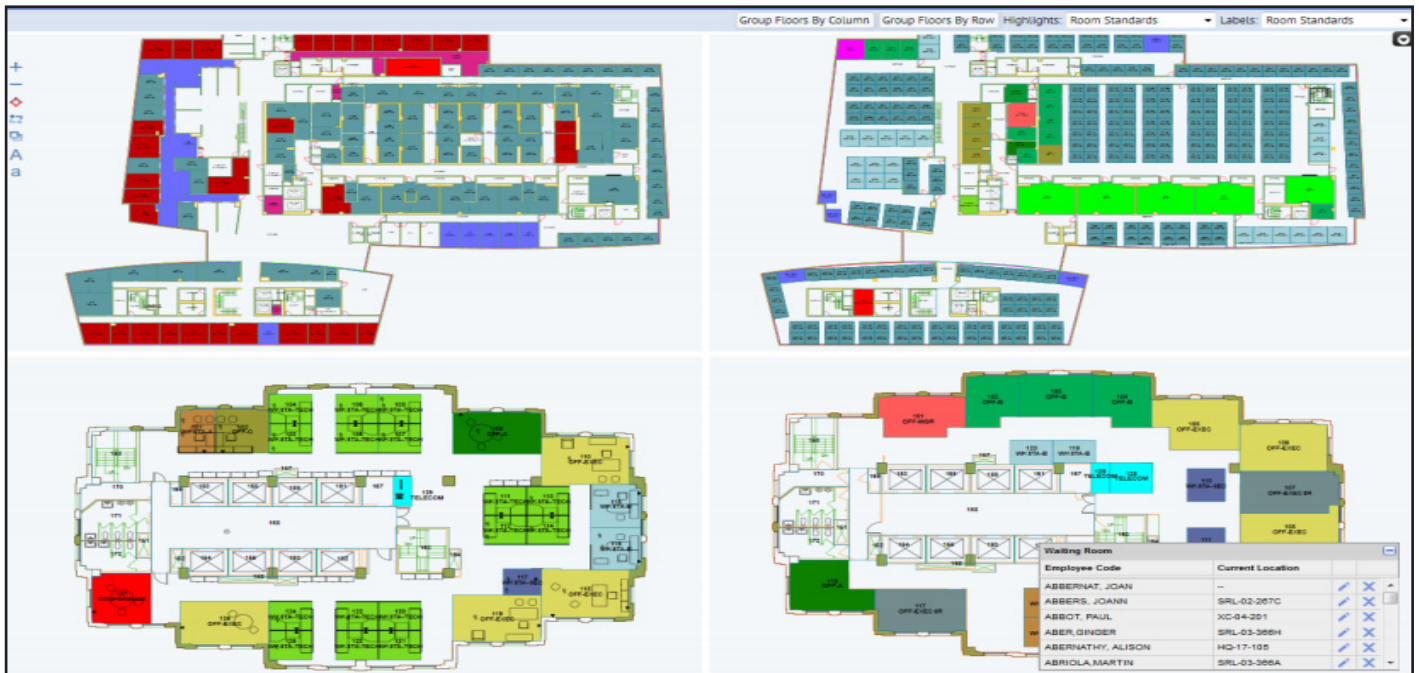


Map Control Event API: Provides an update to the Esri map control event API. The event API allows ARCHIBUS application developers to listen for specific map events and act when they occur. You can react to map loading, layer loading, reference-layer loading, feature-layer loading, marker and feature click, as well as marker and feature mouse-over and mouse-out events.

Token Authentication: Customers are now able to use secure ArcGIS map services when publishing assets to ArcGIS from the Smart Client Extensions. ARCHIBUS V.23.2 supports TOKEN-BASED and OAUTH2 methods of authentication with ArcGIS Server. ArcGIS authentication is configured through a combination of activity parameters and a properties file. Activity parameters are used to configure the type of authentication that will be used and provide the URL to the desired ArcGIS authentication service.

What's New? Platform

HTML Drawing Control Enhancements



The V.23.2 HTML drawing control has been improved to include the majority of the features of the Flash drawing control along with a wealth of new features to support advanced applications.

New features include:

- Common Drawing Controller implements typical drawing use cases and simplifies application development
- Display multiple drawings
- Selecting assets and layers in multiple drawings
- Drag and drop assets between multiple drawings and the asset window
- Hatch pattern/gradient highlights
- Border highlights
- Highlight and border highlight legend panels
- Mouse zoom, pan, and zoom window
- Redlining API

With these features, V.23.2 has replaced all of the Flash drawing and charts with HTML5 drawings and charts. The previous Flash features are still supported so that add-in managers can continue to run personalised views that use Flash.