



BlueCielo ECM Solutions

BlueCielo TeamWork with Excitech

- View more than 250 file formats without using native applications
- Use powerful searches to retrieve documents
- Easy Navigation provides fast on-screen information
- Save and share searches with others in your team
- Redline documents
- Access your drawings via the internet, LAN or WAN
- Create document workflow per document type
- Automatically track revisions of a document
- Find all previous versions of a document
- Visually compare different versions of a design
- Full support for AutoCAD range
- Sheet Set Manager support
- Automatic title block updates in your drawing
- Manage external references across large workgroups

BlueCielo TeamWork is a powerful, reliable and simple document management solution for construction and engineering workgroups. It enables designers to conveniently manage, share, control and track design information throughout the entire project lifecycle.

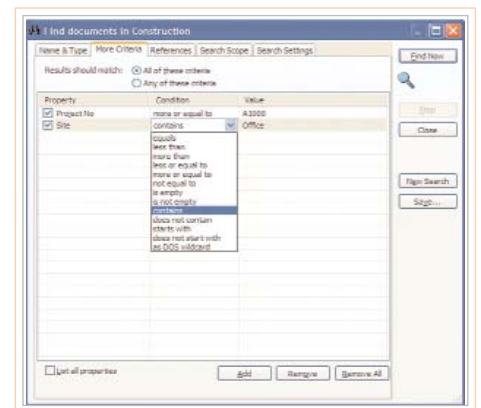
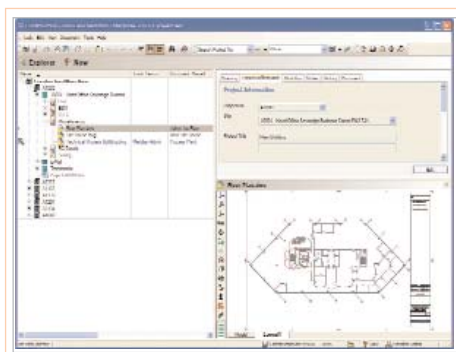
BlueCielo TeamWork integrates with all your favourite CAD and office software, delivering the features you need most to be productive and stay ahead.

Fast Access to Design Information

BlueCielo TeamWork provides instant overviews on the status and location of projects in order to help teams increase their overall productivity through fast and easy access to all design and office data. Standardising your design office with document management will help you to comply with important ISO, OSHA and other government regulations.

See All Your Documents Fast

BlueCielo TeamWork allows you to view, access, and manage all your documents without having



the native/source application on your system including more than 250 of the leading Windows applications.

Virtually everything from graphics formats such as AutoCAD, Inventor, SolidWorks and Bentley's MicroStation to popular office formats including MS Word, MS PowerPoint, MS Excel, Adobe Acrobat PDF and more are supported. Hybrid and raster format support such as JPEG and TIFF are also included.

Save Time by Finding Documents Faster than Ever

With BlueCielo TeamWork you can eliminate time spent searching for documents. The software offers a variety of search techniques to retrieve your documents with unequalled speed. You can

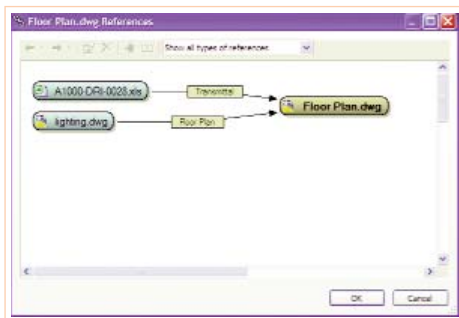
excitech
technology for design



also save search queries and search results, and share them with others in your team. When you locate your document, BlueCielo TeamWork lets you preview the file before opening it in the appropriate application.

Secure Your Documents and Protect Your Work

Security is the cornerstone of any document management solution, as it is crucial in preventing unauthorised individuals and groups from accessing your valuable data.



BlueCielo TeamWork provides top-level security by allowing you to maintain multiple levels of security for individuals, groups and document types.

Virtually everything from read or write access to files, prior versions, revisions, change orders, external applications, and supervisor functions can be assigned and enforced based on user security level.

Save Effort by Creating Custom Workflows

New revision levels are automatically assigned as the document moves through the design process. Never will there be any confusion about the status of a document and where it should go next, providing tremendous simplicity.

Integration with Leading CAD Solutions

BlueCielo TeamWork features tight integration with the leading CAD design solutions, including AutoCAD, Autodesk Inventor and SolidWorks. Easily manage external references and title block attributes with BlueCielo TeamWork. Advanced capabilities include full support for construction and engineering workgroups transitioning from 2D to 3D design tools.

Easy to Deploy, Easy to Use

As the new generation of workgroup EDM software, BlueCielo TeamWork is designed for fast and easy implementation using wizards and pre-defined templates. The software solution also features a quick-to-configure security system for powerful document control.

Flexible Solution, Ready for the Future

Building on the proven capabilities of previous solutions with advanced technology from BlueCielo's benchmark BlueCielo Meridian, BlueCielo TeamWork combines the best of both worlds.

When the need arises to scale BlueCielo TeamWork beyond your department up into the division or enterprise, you can upgrade to BlueCielo Meridian, an even more scalable and uniquely customisable EDM system. BlueCielo Meridian features direct links with MRO Software, ARCHIBUS, SAP and other corporate automation systems.

About Excitech

Founded in 1985, Excitech has always been committed to delivering the highest quality range of products and services to ensure our customers are able to realise the maximum productivity within their design departments.

Our breadth of experience, depth of expertise and process management have resulted in first class supplier accreditation and quality certification plus widespread industry recognition. Today, Excitech is a leading supplier of CAD, EDM and CAFM solutions and supporting technologies in the UK with a team of over 110 staff advising, training, supplying and supporting its customers.

Working in partnership with:



Design Technology Centre,
8 Kinetic Crescent,
Innova Business Park,
Enfield, Middlesex, EN3 7XH.

T: 0845 370 1500
F: 0845 370 1400
E: info@excitech.co.uk
W: www.excitech.co.uk

Offices also in:
Bristol, Central London,
Glasgow, Leatherhead,
Manchester and Newcastle

excitech
technology for design